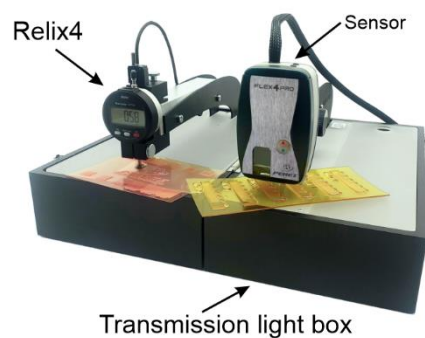

FLEX4PRO and RELIX4

After almost 1000 installations worldwide of the extremely popular FLEX3PRO Flexo Analyzers, PERET redesigned and launched the new FLEX4PRO Flexo Analyzer at LabelExpo 2023. The FLEX4PRO along with the new RELIX4 makes the perfect combination of equipment for controlling the flexo plate production. The functions of focus levels and light scattering provide important information on the quality of cleanliness of the intermediate depth structure. The new operating software also simplifies the operation of the device. Integrating the RELIX4 into the FLEX4PRO saves space and enables rapid measurement of dot sizes and relief depths.

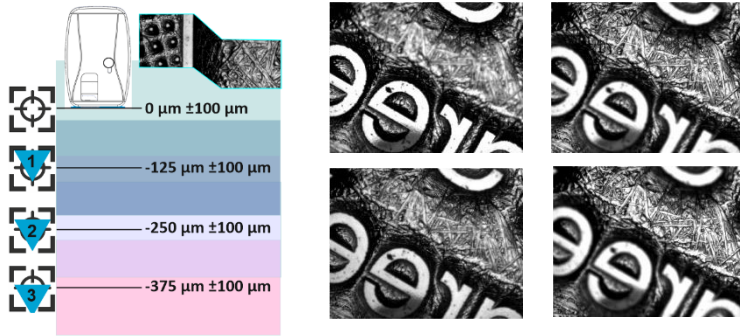


The Relix4 is an optional, the FLEX4PRO can also be used without RELIX4. The RELIX4 can also be used stand-alone without the FLEX4PRO device.

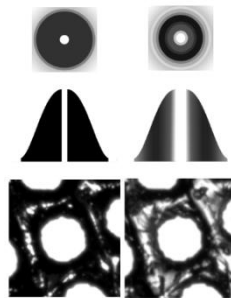


The new FLEX4PRO is a totally redesign implementing

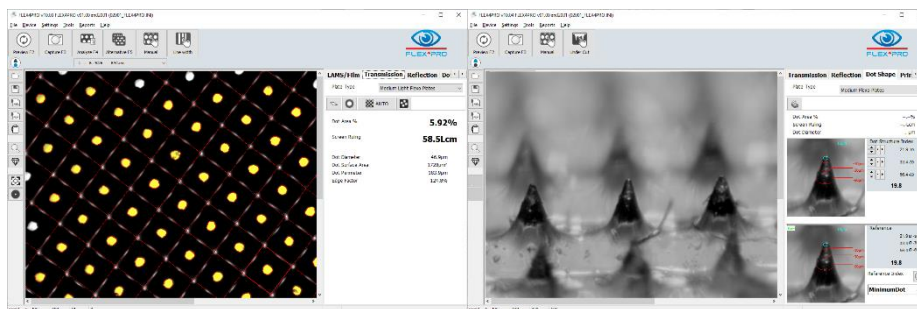
- mechanical improvements including additional bearings in the up and down movement and a new connector between Sensor head and Transmission light box.
- new electronics using new microprocessor technology, field upgradable firmware, new LED technology with more powerful light,
- new illumination in reflection, including RGB illumination from two sides and IR illumination for black ink separation,
- new illumination in transmission, that can be controlled by the microprocessor improving the inter instrument agreement,
- The FLEX4PRO now implements 4 different focus levels to obtain sharp images inside the plate down to the plate floor.



- The focus level is selected by Software.
- High Contrast image transmission optics for measurement (identical to FLEX3PRO) and Detail Contrast Image for visual control switchable by Software



- Redesigned Software reorganizing all functions to improve the easy of use.



- The repeatability and accuracy has been improved
- The Stain Density Factory calibration has been improved
- LAMS readings are displaying the corresponding density value
- CMYK readings in 4 colors using the IR Illumination for black color
- The verification on the TARGET now implements an additional feature for remote device calibration. The calibration can be done remotely without the need to ship back the device to Factory, if the deviation does not exceed a certain tolerance.
- New Software Functions like measurement of dot area and screen ruling in 3D, improved dot recognition in transmission measurements.

The new FLEX4PRO is the next generation technology in controlling the plate making process